



**COMMONWEALTH OF KENTUCKY
TRANSPORTATION CABINET**
Frankfort, Kentucky 40622
www.transportation.ky.gov/

Matthew G. Bevin
Governor

Greg Thomas
Secretary

December 7, 2016

CALL NO. 303
CONTRACT ID NO. 162916
ADDENDUM # 1

Subject: Boyd County, FE02 010 0060 B00062N
Letting December 9, 2016

- (1) Revised - Bid Items - Page 78 of 78
- (2) Added - Drawings - Pages 1-2 of 2

Proposal revisions are available at <http://transportation.ky.gov/Construction-Procurement/>.

If you have any questions, please contact us at 502-564-3500.

Sincerely,

A handwritten signature in cursive script that reads "Rachel Mills".

Rachel Mills, P.E.
Director
Division of Construction Procurement

RM:ks
Enclosures



An Equal Opportunity Employer M/F/D

PROPOSAL BID ITEMS

Report Date 12/7/16

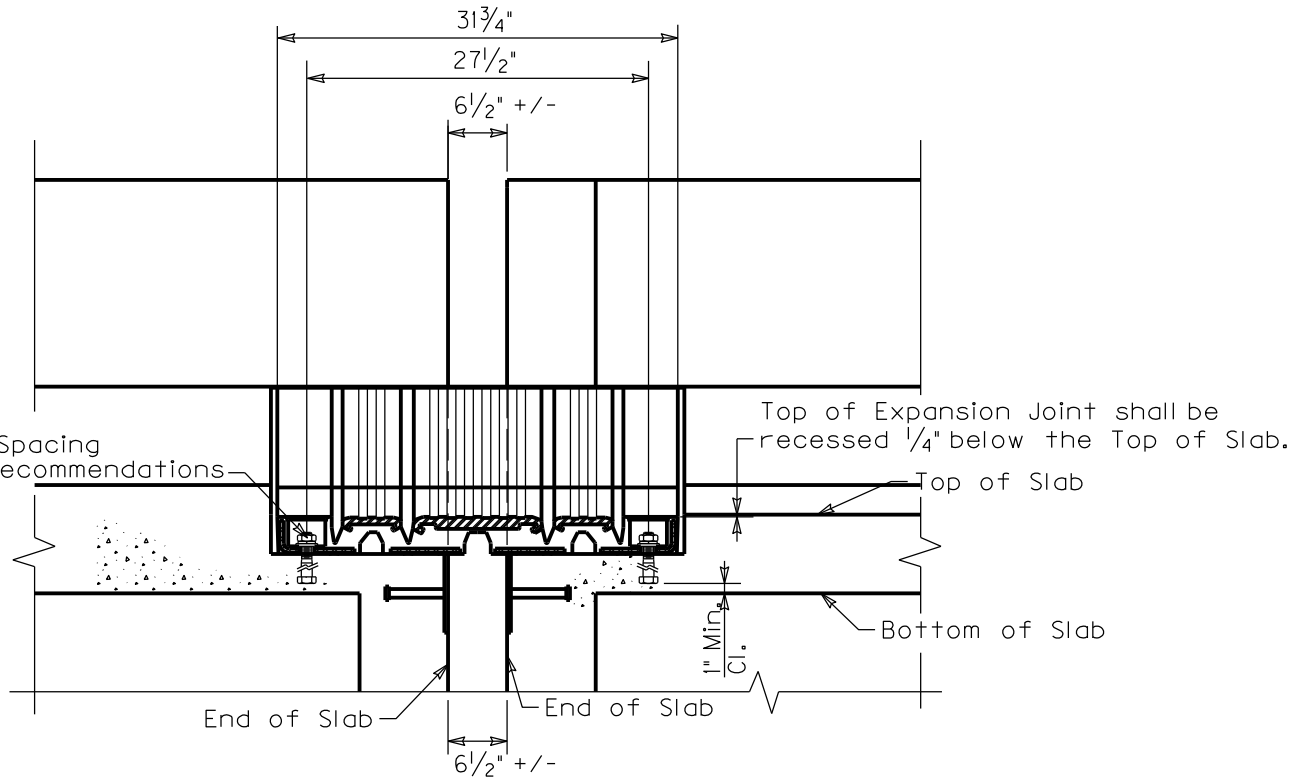
Page 1 of 1

Section: 0001 - BRIDGE

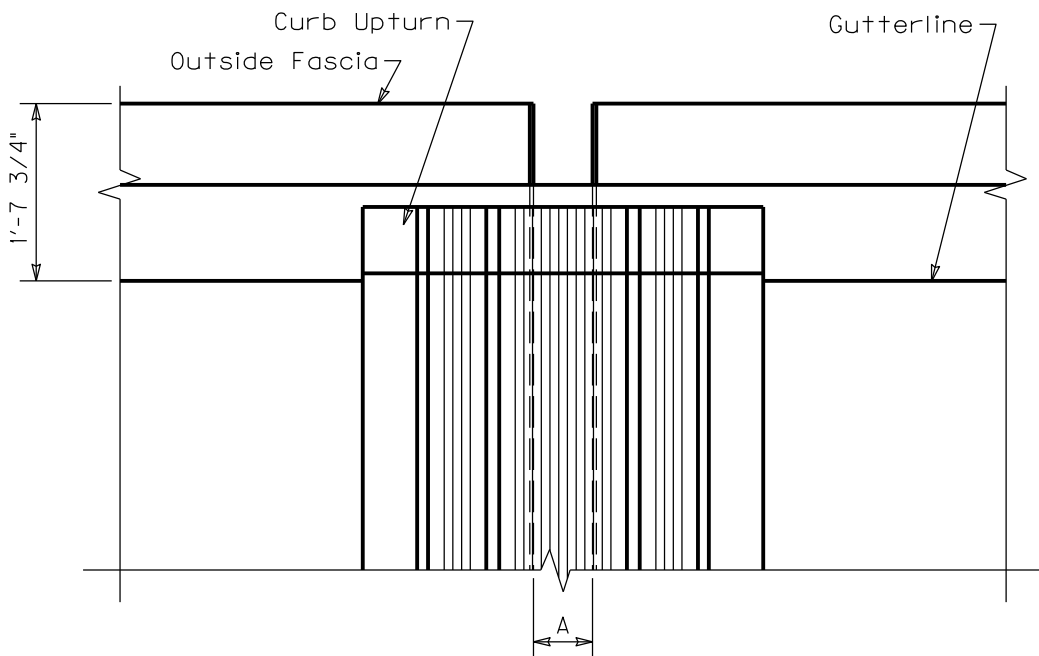
LINE	BID CODE	ALT	DESCRIPTION	QUANTITY	UNIT	UNIT PRIC	FP	AMOUNT
0010	02562		TEMPORARY SIGNS	149.00	SQFT		\$	
0020	02650		MAINTAIN & CONTROL TRAFFIC APPLIES TO 010B00062N	1.00	LS		\$	
0030	02653		LANE CLOSURE	2.00	EACH		\$	
0035	03291		EXPAN JOINT ASSEMBLY (ADDED: 12-7-16)	116.75	LF		\$	
0040	03299		ARMORED EDGE FOR CONCRETE	70.30	LF		\$	
0050	03304		BRIDGE OVERLAY APPROACH PAVEMENT	711.00	SQYD		\$	
0060	04934		TEMP SIGNAL MULTI PHASE	1.00	EACH		\$	
0070	06514		PAVE STRIPING-PERM PAINT-4 IN	5,936.00	LF		\$	
0080	06549		PAVE STRIPING-TEMP REM TAPE-B	500.00	LF		\$	
0090	06550		PAVE STRIPING-TEMP REM TAPE-W	1,000.00	LF		\$	
0100	06551		PAVE STRIPING-TEMP REM TAPE-Y	2,000.00	LF		\$	
0110	08150		STEEL REINFORCEMENT	400.80	LB		\$	
0120	08504		EPOXY SAND SLURRY	285.30	SQYD		\$	
0130	08510		REM EPOXY BIT FOREIGN OVERLAY	4,565.00	SQYD		\$	
0140	08526		CONC CLASS M FULL DEPTH PATCH	30.00	CUYD		\$	
0150	08534		CONCRETE OVERLAY-LATEX	190.20	CUYD		\$	
0160	08549		BLAST CLEANING	4,851.00	SQYD		\$	
0170	24094EC		PARTIAL DEPTH PATCHING	126.80	CUYD		\$	

Section: 0002 - DEMOBILIZATION

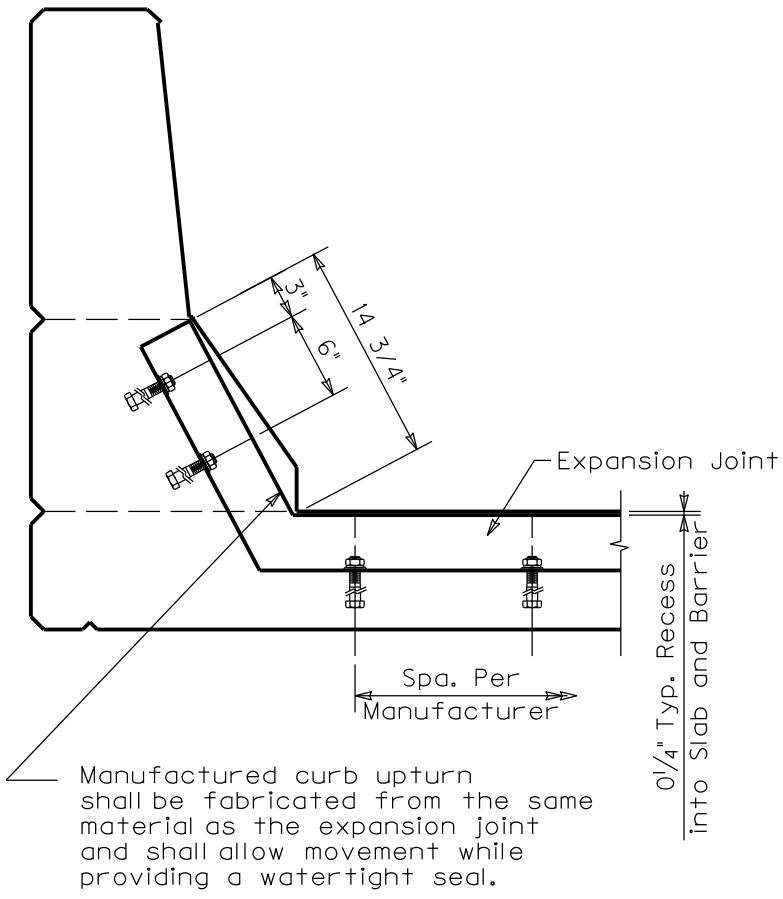
LINE	BID CODE	ALT	DESCRIPTION	QUANTITY	UNIT	UNIT PRIC	FP	AMOUNT
0190	02569		DEMOBILIZATION	1.00	LS		\$	



ELEVATION VIEW AT GUTTER



PART PLAN OF EXPANSION JOINT



Manufactured curb upturn shall be fabricated from the same material as the expansion joint and shall allow movement while providing a watertight seal.

SECTION THROUGH BARRIER